



NOVA

NOVA UNIVERSITY
LISBON

SUSTAINABILITY AT NOVA 2022

Facts and Figures

Mural at NOVA FCSH allusive to the human impact of climate change (SDG 13 Climate Action), painted by the artist Pitanga (March 2023).



Index

A COMPREHENSIVE UNIVERSITY	3	SUSTAINABILITY AT NOVA	7	EDUCATION	16
A WORD FROM THE LEADERS	4	Governance	8	INNOVATION AND SOCIETAL IMPACT	20
10 MINUTE SUMMARY	6	Rankings	9	INFRASTRUCTURES AND SERVICES	24
		NOVA Community	10	Environmental Impact	25
		Highlights	12	Social Impact	30
		RESEARCH	13	SUSTAINABILITY IN 2023	32

A COMPREHENSIVE UNIVERSITY

NOVA University Lisbon is a public higher education institution, with the mission of serving society at a local, regional and global level. NOVA's motto is to be 'a global and civic university'. NOVA's strategy supporting education, research and value creation is aligned with an international agenda and partners from different continents, and is committed to benefitting society, culture and the economy, through innovation and contributions to the emergent challenges of this century.

NOVA is a comprehensive European university, that includes nine schools: science and engineering, social sciences and humanities, medicine, public health, tropical medicine, life science technologies, economics and business, law and data and information science. Despite spanning diverse scientific areas, the NOVA schools share the same ambitions and goals: advance and disseminate knowledge, promote the understanding of cultures, societies and individuals and develop excellent research and teaching with the aim of impacting the community and for the benefit of all.

The NOVA Strategic Plan 2020-2030 adopts Sustainability as a driver to develop solutions to the main challenges to individual, social and institutional development that are economically viable, environmentally friendly and socially fair, so that current and future generations can carry out their projects for a better future. There are several initiatives in place in the different schools regarding the implementation of the Agenda 2030 Sustainable Development Goals. At the University level, the goal is to gather and further develop these initiatives and actions to boost NOVA's credentials as a Sustainable University.

The Sustainability at NOVA 2022- Facts and Figures reports key indicators regarding NOVA's activities for the year 2022 and, when possible, for a time series since 2019. The report covers several components namely, the governance of sustainability; who is considered part of the NOVA community; how sustainability is being accomplished in research, education and innovation activities; how infrastructures and services incorporate environmental and social impacts and concludes with key actions for 2023. All numbers refer to 2022, if not stipulated otherwise. For the first time, the report Sustainability at NOVA 2022 - Facts and Figures accompanies the Integrated Management Report 2022 of NOVA University of Lisbon, constituting an integral part of the information that characterizes NOVA's activity in 2022. We would like to underline that this report Sustainability at NOVA 2022- Facts and Figures cannot be considered a Sustainability Report due to the absence of several key indicators.





João Sàágua

RECTOR

Since its foundation, NOVA University has always been committed to academic excellence, but we also recognize our responsibility towards the environment and society at large as part of our strategic vision of being a global and civic university.

Sustainability is a broad concept that encompasses many aspects of our lives and our planet. Here at NOVA, we must apply this concept at all levels of our activities: from teaching and research to the management of our campi and the way we interact with the community. This this requires essentially three main courses of action: integrating sustainability into our curricula and encouraging research and innovation in this area; preparing our students to think critically about environmental, economic and social problems and enable them to develop creative and sustainable solutions; and encouraging responsible consumption practices, sustainable mobility, and the adoption of renewable energies on our campuses.

In this process, we need to be open to dialogue with civil society organizations, companies and government to collaborate in the search for sustainable solutions: we can offer our knowledge and expertise to face local challenges, while learning from the practices and knowledge of other sectors.

Sustainability is not a passing trend, but an urgent necessity. Let us all work together to promote sustainability in every aspect of our university life and show the world that universities can be drivers of positive change, contributing to a more sustainable future for all.

A WORD FROM THE LEADERS

Júlia Seixas

PRO-RECTOR FOR SUSTAINABILITY

Sustainability is a core value of NOVA's missions and operations, considered as a priority in several infrastructure projects, R&D outcomes, initiatives with societal impact and different components in operations and services. Our quest to contribute to SDGs and climate action in line with the Paris Agreement goal has inspired the NOVA community in a wide range of activities. NOVA's journey to sustainability, aiming to achieve high and bold standards, has evolved during 2022 at different levels. A bold step refers to the different engagement schemes, put in place with representatives from the nine schools and services.

The report NOVA Sustainability 2022 Facts & Figures takes a similar format to that of 2021 and, for the first time, is delivered as part of the NOVA Activity and Accountability Report 2022. This milestone represented a huge effort from dozens of people from all schools and services who contributed promptly and effectively to requests for data provision and management, with notable contributions from the NOVA for the Globe members. My sincere thanks to all.

An effort was made this year to prepare a time series of selected indicators since 2019, mostly on academic data and environmental impact. As revealed in this report, there are reasons to be cheerful but it is also necessary to reflect on what is still to be done. Our conviction of the role sustainability can play in NOVA's missions as well as the influence it can have on NOVA's students and on all partners participating in shared projects and initiatives, gives us positive energy and bolsters our ambitions for the next year.

NOVA CAMPUS SPREAD OVER LISBON AREA

9 SCHOOLS AND INSTITUTES

- 1 NOVA School of Science and Technology | FCT NOVA
- 2 NOVA School of Social Sciences and Humanities | NOVA FCSH
- 3 NOVA School of Business and Economics | NOVA SBE
- 4 NOVA Medical School | NMS
- 5 NOVA School of Law
- 6 NOVA Institute of Hygiene and Tropical Medicine | IHMT NOVA
- 7 NOVA Information Management School | NOVA IMS
- 8 NOVA Institute of Chemical and Biological Technology António Xavier | ITQB NOVA
- 9 NOVA National School of Public Health | ENSP NOVA
- 10 Rectorate

3 STUDENTS RESIDENCES

- i Alfredo de Sousa Residence | Campolide Campus
- ii Fraústo da Silva Residence | Caparica Campus
- iii Lumiar Residence | Lumiar Campus



10 MINUTE SUMMARY

EDUCATION

NOVA hosted 24 667 students in 2022, 53% in undergraduate and integrated masters, 37% in masters and 9% in PhD programmes, 23% of them being foreign students. The course update reported in 2022, on both sustainability-focused and -inclusive areas, revealed 372 curricular units (UC) from the various NOVA programmes, in which at least one SDG was worked on (9% of the total UC offered). In 30% of these UC, a primary and explicit focus on sustainability was reported. All SDGs have been addressed, with SDG3 and SDG11 being the most popular. SDG7, SDG8, SDG9, SDG12, SDG16 and SDG17 were worked on in more than 50 courses each.

RESEARCH

NOVA hosts 39 R&D Units, with 92% of them ranked as very good and excellent research units (FCT-MCTES, 2019). NOVA faculty included 1 244 professors and 516 researchers, with 40% in social science, arts and humanities, 30% in health and 30% in STEM areas (these numbers refer to 2021, due to not available more recent numbers). In 2022, NOVA faculty produced 1 689 scientific publications with direct contributions to SDGs (32% of the total publications). SDG3 was the most mentioned (38% of total mentions), with contributions from all schools, and topped by NOVA Medical School and IHMT. SDG 4 was the second most mentioned, topped by FCSH and SDG16 the third topped by FCSH and NSL with similar contributions. SDG 7 and 8 had more than 100 mentions in those publications, with different schools contributing, with FCT NOVA being the highest contributor for the former and IMS for the latter. It is worth noting that the normalized citations per scientific area index of those SDG related publications is 59% (i.e. impact above world average of all the publications classified by SDG and indexed in Scopus).

INNOVATION AND COMMUNITY

In 2022, 3 800 students from NOVA took entrepreneurship training, 15% more than in 2021. This number includes participation in programmes organized by the Rectory, and courses delivered by NOVA's schools. NOVA Impact launched the first MOOC (Massive Online Open Course) in Entrepreneurship, open to the internal community and to the public in general, facilitating access to quality education. A detailed sustainability assessment on NOVA's start-ups identified the existence of 57 sustainability-related start-ups, 10 of them are Spin-offs.

ORGANIZATIONAL SUSTAINABILITY

In 2022, the environmental indicators related with energy consumption showed a downward trend since 2019 (base year): (i) electricity consumption (19,5 million kWh, including 2% of domestic production) recorded a 10% decrease; (ii) gas consumption (2,3 million kWh, including natural gas and LPG) decreased by 19%. Water consumption (211 thousand m³, including 10% from on campus water extraction) increased by 11% compared to consumption in 2019. The estimation of CO₂ emissions (Scope 1 and 2, according to GRI standards), related to energy consumption, points to 5188 t CO₂ in 2022 (90% referred to electricity consumption), which represents a 24% decrease compared to emissions estimated for 2019. This trend is explained partially by the reduction in energy consumption and by the decrease of the carbon intensity of electricity acquired from the grid (-17% on average in 2022, compared to 2019). Regarding social indicators, it should be underlined 30% of NOVA students were the first generation of their families starting a degree, and 9% of NOVA students receiving significant financial aid.

SUSTAINABILITY AT NOVA



SUSTAINABILITY AT NOVA

GOVERNANCE

Sustainability is integrated at the highest level of NOVA's governance model, meaning NOVA recognizes its role in boosting change and caring for the Planet and people with the aim of creating a safe future. The multiple dimensions of sustainability, organized around 17 Sustainable Development Goals, must be integrated across all disciplines in teaching, research and innovation and value creation, as well as the NOVA campuses and corresponding services provided. NOVA aims to lead by example so its students may take actions to make them the future leaders that society requires.

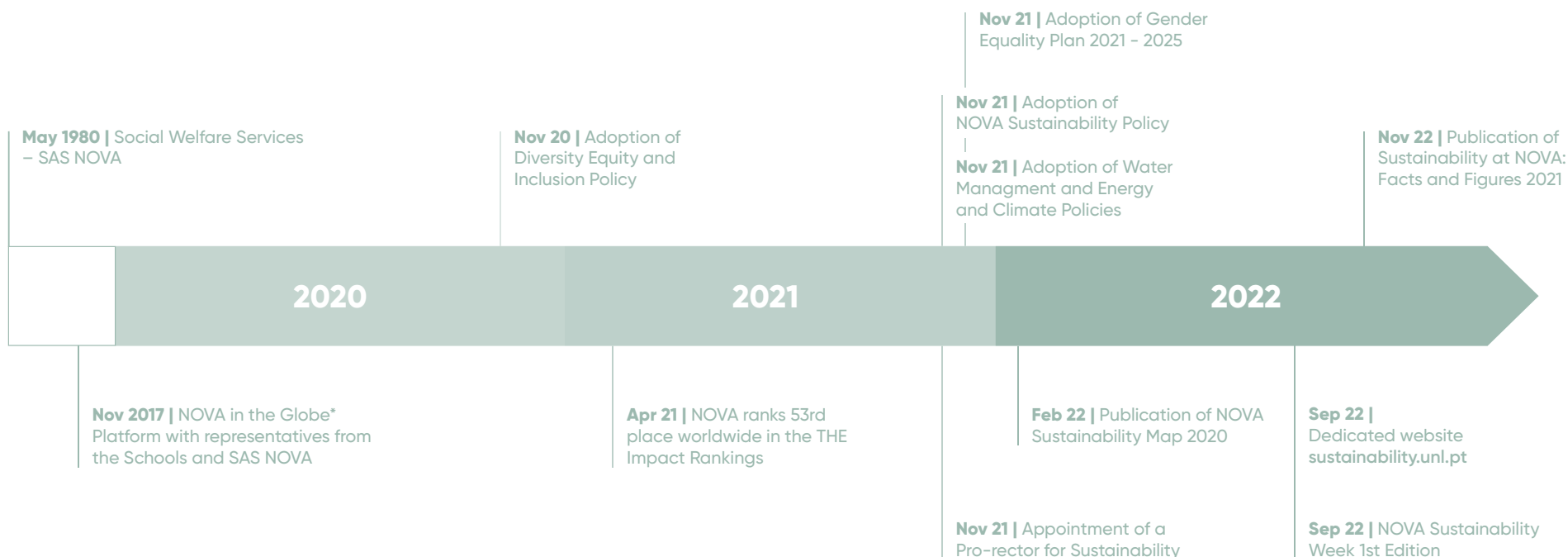
Sustainability at NOVA is leveraged through the NOVA4theGlobe platform which joins representatives from all NOVA Schools. The platform is organized in two councils: the academic council with representatives from all schools plus a student, aiming to promote interdisciplinary collaboration across education and research; and the operational council with representatives from all schools plus a student and a representative from the social support department, aiming to increase awareness and implement organizational sustainability actions. Together, both councils share the same ambition: to transform NOVA into a sustainable university.

ACADEMIC COUNCIL

- Tomás Ramos – FCT NOVA
- Ana Santos Pinto – NOVA FCSH
- Maria A. Cunha-e-Sá – NOVA SBE
- Conceição Calhau – NMS
- Claire Bright – NSL
- Tiago Correia – IHMT NOVA
- Miguel Neto – NOVA IMS
- Nelson Saibo – ITQB NOVA
- Julian Perelman – ENSP NOVA
- Students' representative

OPERATIONAL COUNCIL

- Marco Lopes – FCT NOVA
- Catarina Bernardo – NOVA FCSH
- Luís V. Martins – NOVA SBE
- Vânia Coucello – NMS
- Jorge Correia – NSL
- Isabel Craveiro – IHMT NOVA
- Sara Ribeiro – NOVA IMS
- Ana Sanchez – ITQB NOVA
- Teresa Magalhães – ENSP NOVA
- João Carreiras – SAS NOVA
- Students' representative



* In 2019, NOVA in the Globe changes its name to NOVA 4 The Globe, focusing its activities on Sustainability.



RANKINGS

TIMES HIGHER EDUCATION | IMPACT RANKINGS

NOVA University annually assesses its performance on specific aspects of sustainability, by submitting information on selected SDGs within the framework of Times Higher Education (THE) Impact Rankings. The 2023 Impact Rankings (fifth edition) report 2022 data and include 1 591 universities from 106 countries/regions. NOVA University Lisbon ranks between the 101-200 universities worldwide, being SDG 5 and SDG 9 being selected as better positioned.



GREENMETRIC



For the second consecutive year, NOVA applied to the GreenMetric Ranking in 2022, with data relating to the calendar year 2021. NOVA ranks 400th, out of 1050 Universities, compared with ranking 554th of 956 Universities in 2021.



SUSTAINABILITY AT NOVA

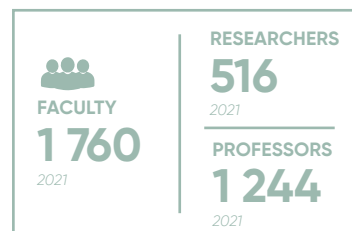
NOVA COMMUNITY

The NOVA Community ("Comunidade NOVA") includes students, professors, researchers and staff, as well as alumni, partner organizations and suppliers, whether national or international, working together daily to foster effective impacts in society, through an open-minded culture of cooperation and innovation. The NOVA community progresses the services underpinning its missions, on education, research, innovation and value creation, and each one has a critical role to play when adopting practices and standards aligned to sustainability in the different domains. An active community is fundamental to furthering NOVA's contributions across the 17 SDGs. To achieve bold goals in the short to long-term, the engagement of the NOVA community is key to making its members change makers, and NOVA a university with a purpose.



FACULTY

The faculty includes Professors and Researchers, committed to the mission of teaching, R&D and value creation to serve society at the local, regional and global level.



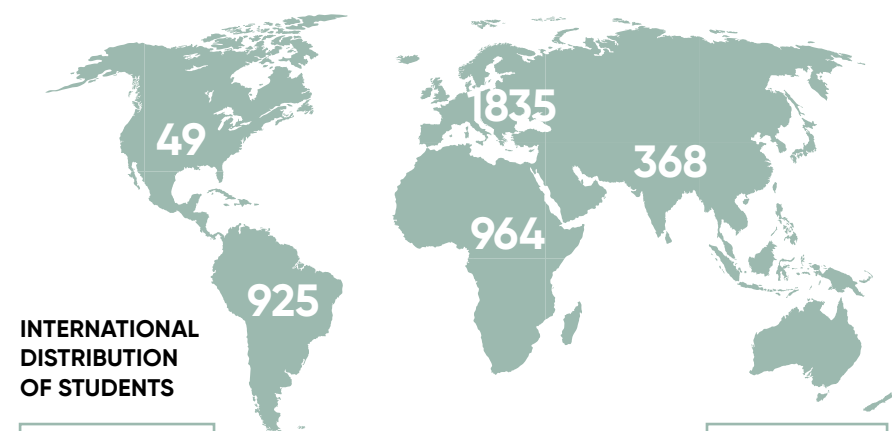
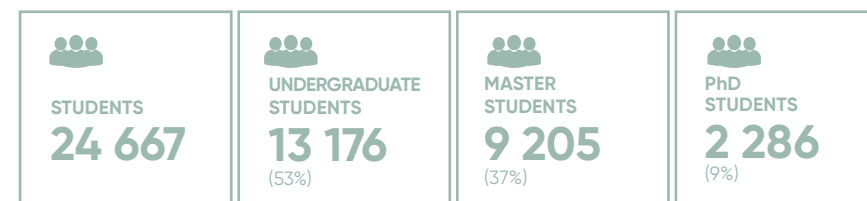
STAFF

The technical Staff are the engine that support NOVA's missions. The technical staff members include specialized individuals with a wide range of expertise and experience critical to support the delivery of the university's education, R&D and value creation and societal impact.



STUDENTS

Students both national and international, are the keystone of NOVA's community. Consisting of over 113 nationalities, they are natural representatives of NOVA's brand as a civic and global university. NOVA's culture of diversity and inclusion, supported by academic curricula and team-based learning, promotes the integration of new entrants and sustainable-driven research. NOVA has been working to provide agency and empower and mobilize it's talent to tackle complex challenges with fresh and innovative approaches and solutions. NOVA students already have an important role in curricular and extra-curricular activities in the social and private sectors, actively contributing to positive local impacts in the communities where they operate.



INTERNATIONAL DISTRIBUTION OF STUDENTS



* Degree equivalent programmes except Life Long Learning

SUSTAINABILITY AT NOVA

NOVA COMMUNITY

ALUMNI

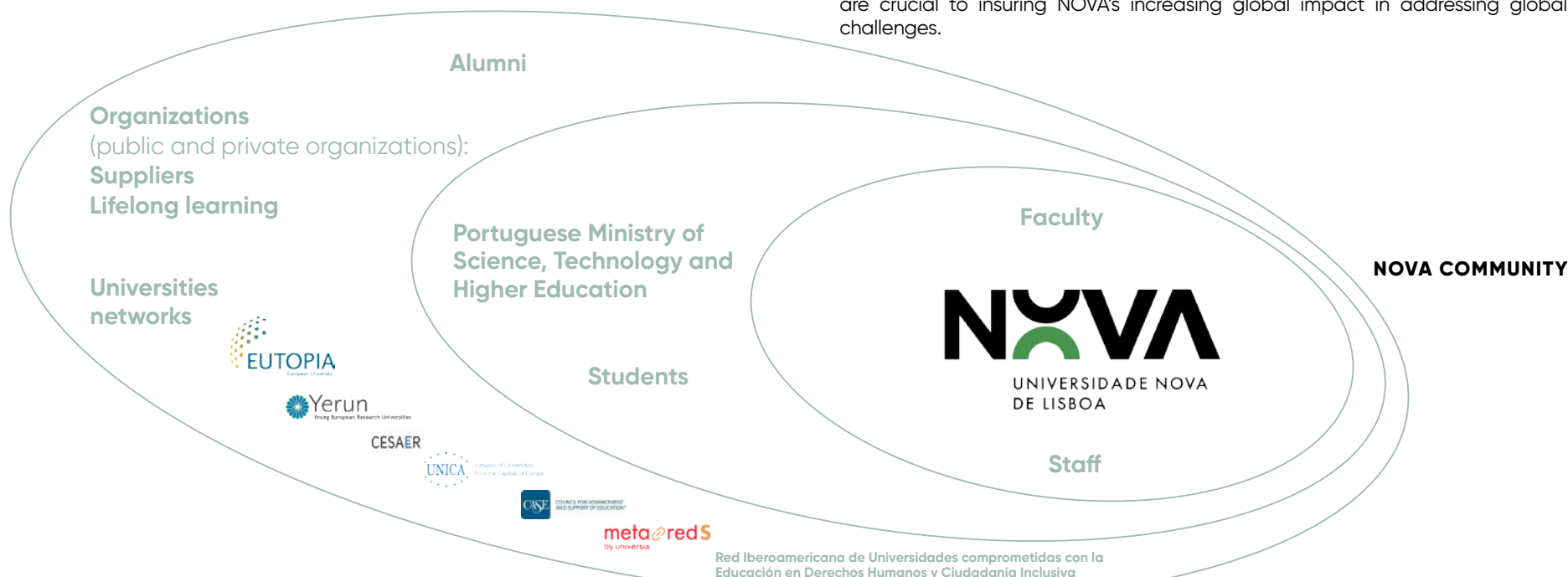
Alumni includes all those who were enrolled in academic and/or research programs and were transformed by their experience at NOVA. They are worldwide ambassadors promoting NOVA's culture and way of thinking. The Alumni community creates outreach opportunities by acting as mentors, ambassadors, lecturers, project partners, donors, active facilitators in talent recruitment and global job placement, or even as social advocates. NOVA connects with its Alumni through several initiatives to maintain confidence and trust with their alma mater.



ORGANIZATIONS

NOVA University is an open system, regulated by the Portuguese Ministry of Science, Technology and Higher Education. NOVA has set up many linkages with a plethora of different organizations, through which knowledge transfer and innovation is exchanged, and impact is activated. Public and private organizations are very important for NOVA and play an important role in the provision of learning spaces, taking ownership of problems, and in acting as contributing partners and recruiters for job market placement.

Public institutions such as municipalities, public policy bodies and regulators have been important partners for research and education projects, while private organizations have been key to boosting applied research, executive education programmes and support as for students' scholarships. Several NOVA schools have programmes to bring companies and other organizations to the heart of the University because NOVA believes this engagement is the engine for effective impact from its activities. Many partnerships which NOVA has established with organizations both nationally and abroad uphold the university's competitiveness as a global entity. At international level, the different networks NOVA is part of are crucial to insuring NOVA's increasing global impact in addressing global challenges.



SUSTAINABILITY AT NOVA IN 2022

HIGHLIGHTS

2022 was a year of great evolution for NOVA regarding Sustainability, following the appointment of Professor Júlia Seixas as Pro-Rector for Sustainability. Her nomination is a clear indicator of the prioritisation of sustainability in NOVA's leadership and a significant institutional contribution to the sustainability journey. A strong relationship with the Vice-rectors managing NOVA's three missions also facilitated the strategic approach to sustainability. From a governance perspective, the regular meetings and effective management of the NOVA 4 The Globe's Academic and Operational Councils are particularly noteworthy.

In the first half of the year, the main priority was the integration of sustainability at NOVA into the scope of the schools, defining the level of ambition and activities they were responsible for. This was achieved through visits to each of NOVA's schools and a follow-up questionnaire to map the main initiatives and priorities in the various sustainability domains. The second half of the year was dedicated to the implementation of activities to support and consolidate what NOVA has already developed, namely reporting and communication, and community consolidation.

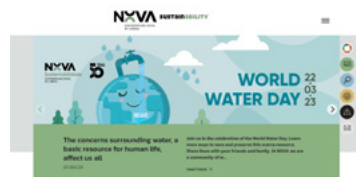
NEW WEBSITE

The new website was developed to showcase the impact of NOVA schools' activities within the scope of the 17 sustainable development goals, and across the university missions, infrastructures & services.

<https://sustainability.unl.pt/> 

NOVA SUSTAINABILITY WEEK


The first edition of an event dedicated to sustainability at the university level took place during a week in September and promoted actions and initiatives around NOVA's various missions and organizational activity, bringing together more than 200 professors, researchers and staff from all NOVA's schools. The event was an opportunity to identify the NOVA community's priorities regarding the promotion of sustainability. The need to promote interdisciplinarity across the scientific domains of the 9 schools was recognized by all participants as a key aspect for further exploration at NOVA. Moreover, the need to promote opportunities to share good practices among teachers and staff from the different schools was also underlined.




NEW DATABASE

Data is a fundamental aspect of sustainability, to monitor and characterize the multiple activities according to a set of indicators, mostly defined by international practices. Therefore, efforts were dedicated to developing a database covering many different aspects of sustainability on education, research, value creation and societal impact, and infrastructures & services. The year 2019 was defined as the baseline year to assess the progress on sustainability. Among the new sustainability references, the following are highlighted:

Sustainability – related education courses

An assessment through the NOVA Education Council's members was conducted through all education programs offered by NOVA to identify the courses taught in the academic year 2020-2021, which are sustainability-focused and inclusive based on [STARS methodology](#)  (Sustainability Tracking, Assessment & Rating System, a programme of the Association for the Advancement of Sustainability in Higher Education). This approach will be carried out in the following years, for updating.

Sustainability – related R&D publications

The classification of publications included in the PURE – Research Information Management System into SDG, using the [Elsevier Sustainable Development Goals Mapping](#) , was taken as the method to assess sustainability in the NOVA R&D. Although this approach is limited, it delivers useful indicators to report on the subject.

Environmental indicators

The database was strengthened with environmental indicators, for the first time NOVA was able to estimate its carbon footprint of energy consumption on scope 1 and scope 2 (according to [GRI standards](#) ).

NOVA ÁGORA

NOVA Ágora is a students' forum, created with students' representatives from all NOVA schools, with the aim of discussing and developing activities in the field of sustainability. NOVA Ágora is an opportunity to engage different generations to jointly address mutual concerns, and reflecting any different perspectives which may arise. NOVA 4 The Globe's academic and operational councils integrates one student each from NOVA Ágora.

RESEARCH

Sustainability demands a systemic transformation of human systems. Research and innovation are key to achieve excellence to tackle and solve complex, dynamic and long-term problems that usually characterize sustainable development.

RESEARCH AT NOVA

Research at NOVA is increasingly motivated to solve the complex problems of sustainable development, across different disciplines and scientific domains. NOVA research community has aligned its agendas with sustainability challenges, be they technological, social or economic, in line with international trends and the scope of European missions.


NOVA has great potential to increase the impact of its research, being well-positioned to tackle multi and interdisciplinary impacts across its nine schools to propose disruptive/innovative approaches and solutions. Indeed, NOVA is in a unique position to scale up research at the interface of several scientific domains, as evidenced during the First Edition of the Sustainability Week round tables, in September 2022.

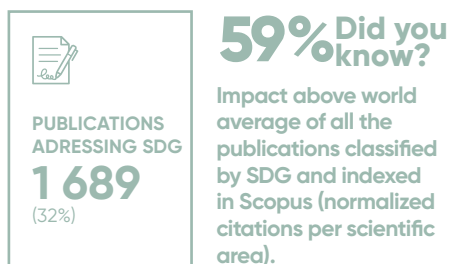
Taking the lead in research contributing to the SDGs, NOVA creates momentum to raise awareness and capacity building, while inspiring others to contribute for the development of a more inclusive and sustainable society. Following the 2021 indicators, in 2022 NOVA increased projects and publications addressing all the SDGs through co-authorship with many colleagues outside NOVA University.

NOVA hosts 39 R&D Units, with 92% classified as very good and excellent research units (FCT international evaluation, 2019), placing NOVA in the national top 3 universities subject to this evaluation. From social sciences to health to science and technology, NOVA is proud to show its commitment to research with impact. As a consolidated community, NOVA strives to attract significant resources from a wide range of funding mechanisms, allowing highly qualified talent to thrive in this unique environment.



SDG ADDRESSED BY PUBLICATIONS

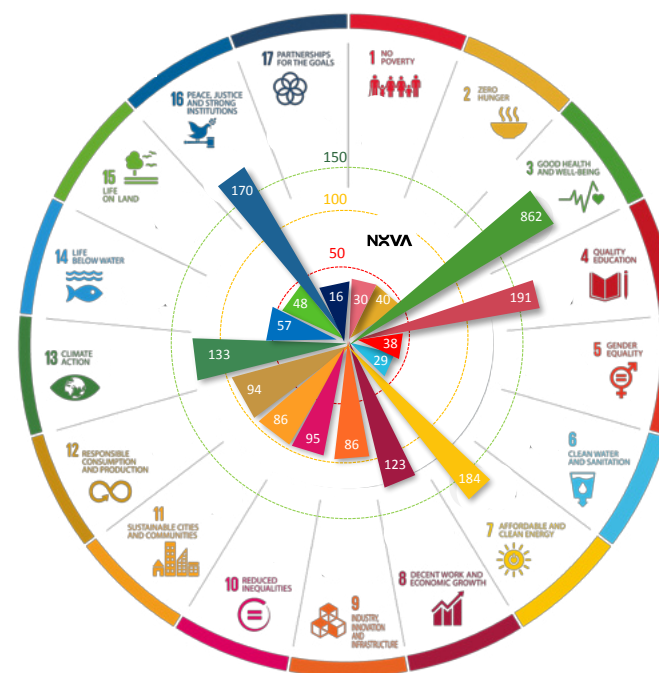
In 2022, NOVA published 1689 publications (total, not only peer-reviewed) contributing directly to different SDGs, accounting for 32% of total publications (32% in 2021), according to the [Elsevier Sustainable Development Goals Mapping algorithm](#). 



The Factor Weighted Citation Impact, which reflects the impact of NOVA publications compared to the international average, of the total publications classified as SDG is 1.59. Publications with an impact greater than this average value are the following: SDG 2 - Zero Hunger (2.23), SDG3 - Good Health and Well-being (1.85), and SDG 4 - Quality Education (3.5).

The graphic shows the number of mentions of each SDG in the 1 689 publications, meaning in some cases one publication may address more than one SDG. NOVA research delivers on all SDGs, with SDG 3, SDG4, and SDG7 at the top. SDG8, SDG13 and SDG16 are addressed more than 100 times each. The publications address a wide range of research interests from social science to health and STEM areas across all the SDGs.

RESEARCH OUTPUTS CONTRIBUTING TO SDG



Note: the graphical distribution of the research outputs is approximate

RESEARCH AT NOVA SCHOOLS OVERVIEW

PUBLICATIONS' ALIGNMENT PER SDG AND SCHOOL

NOVA's publications in 2022 cover all the SDGs, although with different intensity across the different SDGs and Schools, as shown in the Table. SDG3 is the champion with 38% of the total SDG mentions and contributions from all schools, topped by NOVA Medical School and IHMT.

The existence of three health related schools and a strong interest on the topic across technology, social sciences, economy and management, information management, law and chemistry and biology explain the dominant representation of SDG3 in NOVA's research publications.

SDG 4 is the second most addressed, with NOVA FCSH contributing to more than 79% of all publications, while SDG7 ranks third, with the highest number of contributions coming from FCT, totalling more than 80% from all publications. SDG8, SDG13 and SDG16 are addressed more than 100 times, with different schools contributing. It is worth mentioning that the respective contribution of each NOVA's schools depends on the number of faculty members (i.e. professors and researchers), being this analysis an illustration of NOVA's commitment to all SDGs.

RESEARCH AT NOVA SCHOOLS OVERVIEW 2022

Total number of publications addressing at least one SDG*	FCT	FCSH	SBE	NMS	NSL	IHMT	IMS	ITQB	ENSP	TOTAL	Representativeness of SDG addressed
SDG 1 – End poverty	1	0	0	0	0	24	5	0	0	30	1,31%
SDG 2 – Zero Hunger	7	3	1	8	0	6	3	7	5	40	1,75%
SDG 3 – Good Health and Well-being	149	41	16	272	2	198	31	50	103	862	37,77%
SDG 4 – Quality Education	0	152	0	0	10	16	13	0	0	191	8,37%
SDG 5 – Gender Equality	1	20	1	1	2	10	1	0	2	38	1,67%
SDG 6 – Clean Water and Sanitation	10	2	1	0	0	12	1	3	0	29	1,27%
SDG 7 – Affordable and Clean Energy	147	9	2	1	2	2	12	9	0	184	8,06%
SDG 8 – Decent Work and Economic Growth	38	15	12	1	8	8	41	0	0	123	5,39%
SDG 9 – Industry, Innovation and Infrastructures	21	1	3	2	4	32	23	0	0	86	3,77%
SDG 10 – Reduced Inequalities	5	28	0	1	8	41	11	0	1	95	4,16%
SDG 11 – Sustainable Cities and communities	17	19	1	1	3	8	35	1	1	86	3,77%
SDG 12 – Responsible Consumption and Production	47	4	3	1	12	8	18	1	0	94	4,12%
SDG 13 – Climate Action	67	16	10	1	4	11	13	8	3	133	5,83%
SDG 14 – Life Below Water	28	9	3	0	5	5	3	4	0	57	2,50%
SDG 15 – Life on Land	16	5	2	1	0	8	15	1	0	48	2,10%
SDG 16 – Peace, Justice and Strong Institutions	3	66	4	3	70	7	15	0	2	170	7,45%
SDG 17 – Partnerships for the Goals	0	1	0	0	2	11	2	0	0	16	0,70%

* Publications are counting for each addressed SDG (e.g. if a publication deals with 2 SDG, it counts twice).

EDUCATION

Education is viewed by NOVA University as having the upmost importance for fostering sustainability, since today's students are tomorrow's professionals and leaders. Whatever the scope of the education programme, from engineering to health, to social sciences to economy and business, the linkages with and implications to sustainability are multiple and diverse, and students must be aware of them.

EDUCATION AT NOVA

The nine schools of NOVA University Lisbon offer more than 250 undergraduate, masters and PhD programmes, structured into almost 4000 courses. In 2022, approximately 60% of NOVA students graduated in Arts & Humanities and Social Sciences, followed by STEM (27%) and Health (14%)¹.



SDG ADDRESSED BY COURSES

NOVA's education programmes offer 372 courses where at least one SDG is addressed, representing 9% of the total courses offered. This indicator compares with 389 courses in 2021, with more stringent data verification as a possible explanation for the slight decrease. The majority of the courses are part of the masters' curricula. These indicators were updated by the course coordinators in all schools, via the Council for Teaching and Learning.

- 30% of SDG related courses were classified as sustainability-focused [the course title or description must indicate a primary and explicit focus on sustainability, i.e. on the interdependence of ecological and social/economic systems or a major sustainability challenge such as climate change, according to STARS*].
- 70% of SDG related courses were classified as sustainability-inclusive [the course title and description do not unequivocally indicate that focus, but it is evident from the course description or syllabus that it incorporates sustainability challenges, issues, and concepts in a prominent way].

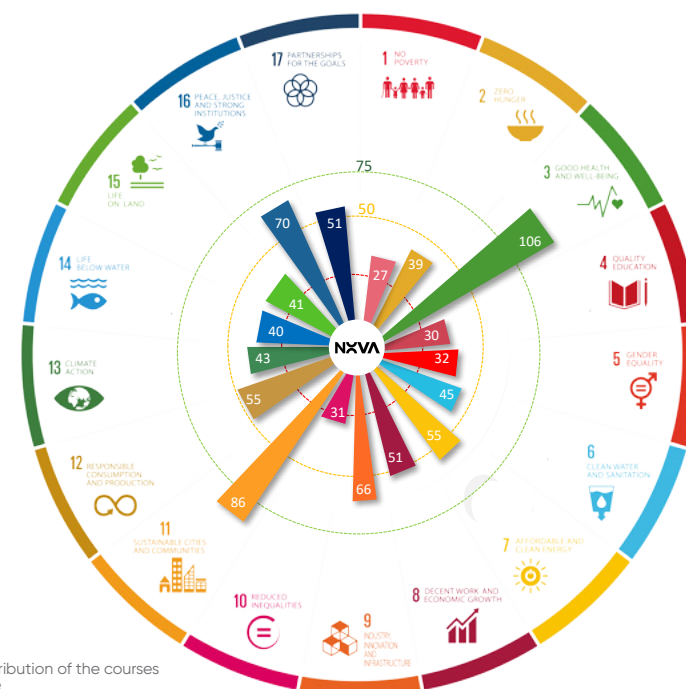
The graphic shows the number of mentions of each SDG in the 372 courses, where one course may address more than one SDG. Although all the SDGs are addressed, SDG3 and SDG11 are the most popular. SDG7, SDG8, SDG9, SDG12, SDG16 and SDG17 are reported as addressed in more than 50 courses each. Looking at the 114 sustainability-focused courses, most are integrated in programmes on environment and sustainability, SDG11 and SDG7 are the most reported. The 280 sustainability-inclusive courses report mostly SDG3 and SDG16.



*STARS stands for The Sustainability Tracking, Assessment & Rating System, a programme of the Association for the Advancement of Sustainability in Higher Education.



COURSES CONTRIBUTING TO SDG

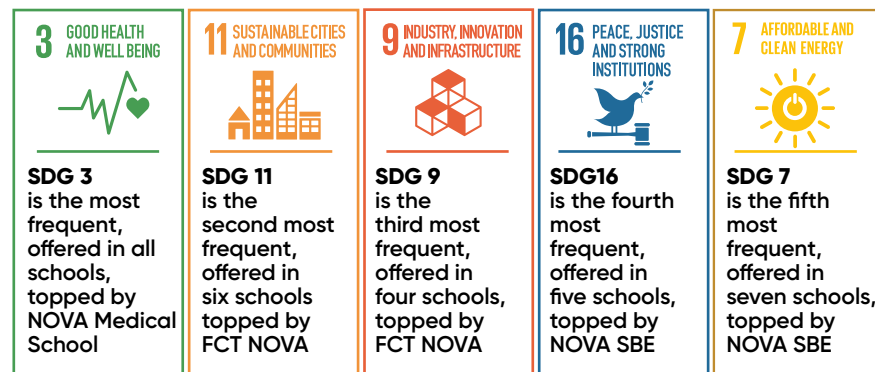


Note: the graphical distribution of the courses per SDG is approximate

EDUCATION AT NOVA SCHOOLS OVERVIEW

COURSES' ALIGNMENT PER SDG AND SCHOOL

The assessment of the sustainability related courses, both sustainability-focused and sustainability-inclusive, showed the top 5 SDGs across NOVA schools are as follows.



Total number of courses addressing SDG*	FCT	FCSH	SBE	NMS	NSL	IHMT	NIMS	ITQB	ENSP	TOTAL	Representativeness of SDG addressed
ODS 1 – End poverty	2	1	23		1					27	3,1%
ODS 2 – Zero Hunger	12		23	3				1		39	4,5%
ODS 3 – Good Health and Well-being	10	1	27	37	4	7	2	11	7	106	12,2%
ODS 4 – Quality Education	2		24		3			1		30	3,5%
ODS 5 – Gender Equality	2		24		3		2	1		32	3,7%
ODS 6 – Clean Water and Sanitation	17		23		3		2			45	5,2%
ODS 7 – Affordable and Clean Energy	28		24		1		1			54	6,2%
ODS 8 – Decent Work and Economic Growth	5		39		5		1	1		51	5,9%
ODS 9 – Industry, Innovation and Infrastructures	31		27		4		4			66	7,6%
ODS 10 – Reduced Inequalities	3		25		1		2			31	3,6%
ODS 11 – Sustainable Cities and communities	35	18	24		5		3	1		86	9,9%
ODS 12 – Responsible Consumption and Production	18	1	27	2	3		2	2		55	6,3%
ODS 13 – Climate Action	8		27		4		2	2		43	5,0%
ODS 14 – Life Below Water	12		23		4			1		40	4,6%
ODS 15 – Life on Land	14		23		3			1		41	4,7%
ODS 16 – Peace, Justice and Strong Institutions	6	3	39		18		4			70	8,1%
ODS 17 – Partnerships for the Goals	3		46		2					51	5,9%

* Courses are counting for each addressed SDG (e.g. if a course deals with 2 SDG, it counts twice).

EDUCATION AT NOVA OTHER PROGRAMMES



NOVA FOUNDATION PROGRAMME - SUPERNOVA

In 2022, SUPERNOVA plans to expand/ed to Europe, giving students who complete this program the opportunity to enter European universities of excellence, namely: IE University, Ca' Foscari University of Venice, Lancaster University and CY Cergy Paris University. For those who speak Portuguese, Algarve University is also a new opportunity for new partnerships. Outside Europe, NOVA Cairo is also an option. There were 57 students in the February edition, with the top 3 comprising the following nationalities: Brazil, Angola and Pakistan. The September 2021 semester had 48 students, with Brazil and Angola remaining in the top 3 nationalities, followed by Ukraine and Russia. The entry of these countries is related to the situation of war in which these countries find themselves.



NOVA SUMMER SCHOOL LISBON

In the context of international recruitment, the first edition of NOVA Summer School Lisbon (NSSL) was held during the month of July, with a guest lecturer from Nova SBE. This project is vocational and designed to help young students identify topics they might be interested in. NSSL also intends to expose its participants to different areas of interest, leading them to practical initiatives and sharing space with professionals in the respective areas. This programme promotes sports, cultural and gastronomic activities, allowing an immersive experience in the city of Lisbon, exploring its culture, history and the Portuguese language. 24 students, from 9 different nationalities participated in this edition.



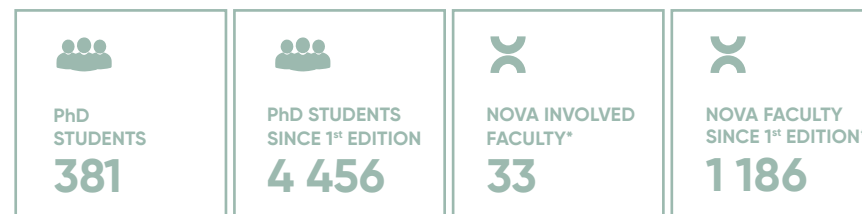
NOVA DOCTORAL SCHOOL

The NOVA Doctoral School (NDS) offers transversal training courses for NOVA PhD students and PhD holders working at NOVA (Researchers and Professors). The courses are voluntary, free of charge, and require prior registration on the NOVA Doctoral School platform. Since the pandemic, most courses have been offered online, with some face-to-face editions starting again this year.

From 2013, until the end of 2022, 232 editions of the courses have been held, with a total of 4456 participations. In 2022, NOVA Pedagogical Innovation, together with NDS, provided pedagogical development, supervision and transferable skills training, for 33 NOVA Faculty members, and 29 international participants who attended a staff training on hybrid teaching, with a total of 1186 participations to date.



NOVA Doctoral School



*Source: Professors' Development Report

INNOVATION AND SOCIETAL IMPACT



Value creation and innovation is an output of NOVA's commitment to quality education and innovative research and constitutes NOVA's third mission. Innovation and entrepreneurship are key to promote scientific-based and highly impactful approaches to sustainable development, through collaborations with industry and society at large.

🔍 INNOVATION AND SOCIETAL IMPACT

In 2022, NOVA was awarded as the “Young Entrepreneurial University of the Year” at European level, by the Accreditation for Entrepreneurial and Engaged Universities (ACEEU), during the Triple E Awards ceremony in Florence. Several activities have been carried out across NOVA schools to promote entrepreneurship and innovation with social and environmental impact: (i) train students in entrepreneurship, providing them with the mindset and tools to turn ideas into projects with impact [SDG 4]; (ii) support new spin-off companies with services allowing them to grow and promote highly qualified jobs [SDG 8]; (iii) foster knowledge-based and high-impact innovation through the valorisation of technologies and specialized knowledge, namely with industry and social organizations [SDG 9].

The NOVA community has been increasingly responsive to societal and economic demands for expertise and knowledge in the various SDG domains. NOVA is proud to deliver and transfer knowledge and tools which feed into social and economic values. This is of upmost importance for NOVA given its practical contributions to goals orientated towards societal development. A methodology is under development to design indicators which characterize NOVA's societal impact.

3 800*
STUDENTS WITH
ENTREPRENEURSHIP TRAINING

* Estimated figure

124
START-UPS

19
SPIN-OFFS

57
SUSTAINABILITY
RELATED
START-UPS

10
SUSTAINABILITY
RELATED
SPIN-OFFS

Accumulated values



SOCIETAL IMPACT

NOVA promotes the engagement of its student and research community into competitions and events, incentivizing the spirit of creating impact in society. In 2022, another edition of the NOVA impACT! challenges with the support of Fundação Santander Universidades promoted the development of several projects and the participation of several teams from NOVA and open to all students of Higher Education Institutions. Additionally, NOVA Impact launched the first MOOC (Massive Online Open Course) in Entrepreneurship that tackles, in particular, SDG 4.4 and 4.5 by promoting education and the relevant skills as well as the entrepreneurial mindset therefore contributing to reducing inequalities. Students volunteering to support local communities is encouraged and nurtured.



NOVA IMPACT! CHALLENGES

In 2022, the NOVA impACT! Challenges program ran for 4 weeks (24th jun. - 15th Jul.) and teams had access to pocket money (500€ each), workshops, specialized mentoring, and other University resources to develop a proof of concept/prototype. Solutions ranged from the development of innovative antiseptic solutions for proper disinfection, applications to better support mental wellbeing, or the prevention of food waste by transforming waste into ice-creams, among several other products.

 **18**
APPLICATIONS

 **12**
TEAMS

 **51**
PARTICIPANTS

 **4 000**
EUROS

WINNER IMPACT CHALLENGES 2022 | COLORIR

coloRIR is an innovative antiseptic solution that provides a new experience for professionals mastering the hand hygiene technique - a way to fight Healthcare Associated Infections (HAI) which are a major public health challenge. The ColoRIR team is formed by ENSP students and represented NOVA iN Born from Knowledge - Ideas (BfK) programme, from ANI (National Innovation Agency).



STUDENTS INVOLVED
Andreia Ferreira
Janete Calderon
Joana Osório



WINNER IMPACT CHALLENGES 2022 | MELLODY

Mellody helps Artists and Music Fans by hosting contests where voters and participating artists can earn rewards. A blockchain economy where users are rewarded by supporting their favourite artists.



STUDENTS INVOLVED
Filipe Ferreira



ENTREPRENEURSHIP ACADEMY

Academia de Empreendedorismo is the first MOOC (Massive Online Open Course) from NOVA University. It is hosted in NAU platform (the National e-learning platform) and is focused on the development of Entrepreneurial skills, touching several topics relevant for the development of innovative projects. The course is in Portuguese with the goal of reaching out to the Portuguese speaking countries (PALOP).



The first edition was launched in 2022 and in just 3 months it reached more than 6000 registrations¹. Of these, more than 2000 finished with an approval rating of over 75%, which represents a 30% conversion rate, more than double the international average for this type of course. At least 130 students on the course were from NOVA University. The online entrepreneurship course is a step towards digitalization while simultaneously contributing to the free access to quality education for all.

 **+6 000**
REGISTRATIONS

 **+2 000**
COMPLETIONS

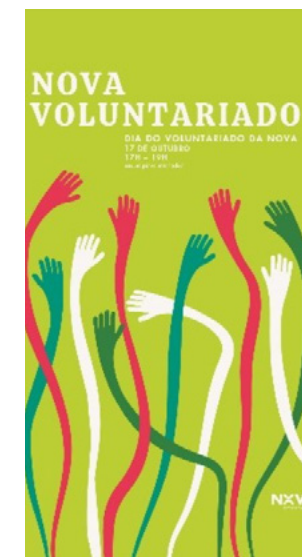
 **+130**
NOVA STUDENTS



Volunteering at NOVA

NOVA Social Welfare Services promotes and supports volunteering activities, in partnership with civil society organizations directly involved in the exercise of solidarity and citizenship. The volunteering programme covers activities in the social, educational, health, scientific, sports, cultural, environmental and leisure areas. By participating in the programme, students receive a Citizenship Mention in their Diplomas.

In 2022, the NOVA Volunteering Day, held in October, gathered both partners and students to discuss the importance of volunteering for the personal and interpersonal development of our students. The students' unions and other formal or informal organizations, such as musical groups or clubs, also develop activities with local organizations and communities. This involvement is very much incentivized by the University as it contributes to their personal and professional development.



CITIZENSHIP MENTION IN
THE DIPLOMA

508 (2,1%)*

* of total students



UNDERGRADUATE
PROGRAMMES

458 (1,9%)



MASTER
PROGRAMMES

50 (0,2%)



STUDENTS ENGAGED
WITH STUDENTS' UNIONS

485 (2%)



NUMBER OF
CIVIL SOCIETY
ORGANIZATIONS
INVOLVED WITH
NOVA'S VOLUNTEERING
PROGRAMME

75

¹ Values for 2023

INFRASTRUCTURES AND SERVICES

The sustainability performance of NOVA University Lisbon is based on the principle of leading by example. Selected environmental and social indicators highlight how NOVA has been taking responsibility for its own impact on sustainability. NOVA is committed to its organizational transformation towards sustainability, aligning with the European Green Deal objectives, the Paris Agreement targets, and the Sustainable Development Goals.

INFRASTRUCTURES AND SERVICES

ENVIRONMENTAL IMPACT

Diverse infrastructures, from classrooms to laboratories, canteens to offices, green areas to car parking lots, are opportunities to change and improve the way all people in the NOVA community live their daily lives in a more sustainable way, regarding water and energy use, waste disposal or commuting options. Services available at the NOVA Campuses and the three halls of residence provide amenities aiming to create the conditions for a smooth and happy daily life which accounts for the very diverse needs of students, professors, researchers, staff and visitors, promoting inclusivity in terms of religion, sexual orientation, ethnicity or any other factor.

The nine schools of NOVA University are organized into eight campuses spread over four municipalities, Lisboa, Cascais, Oeiras and Almada, totalling more than 821 thousand m² to support its community of 28 261 people. Three halls of residence in Lisbon and Almada offers 460 beds for students. NOVA infrastructures develop over almost 99 thousand m² of ground floor area and almost 495 thousand m² of green areas. NOVA schools are developing several initiatives and projects to minimize resource use while maintaining or improving service provision.



TOTAL AREA

821 066m²

GREEN AREA

494 167m²

60% of the total area

GROUND
FLOOR AREA**98 549**m²GROSS
FLOOR AREA**287 832**m²

ENERGY AND CO₂ EMISSIONS AT NOVA



In 2022, data on energy consumption and production was collected for the time series 2019 – 2022*. Data collection and organization was greatly improved compared with last year, although additional opportunities for further improvements were identified. An important initial consideration is the respective boundaries of each campus and school or service. For example, the consumption of energy at the Caparica Campus includes the FCT NOVA buildings as well as infrastructures managed by SAS NOVA at the students' residence Fraústo da Silva and the canteen. When data is organized by school, which is important for future management decisions, FCT NOVA includes only its buildings and SAS NOVA sums up the students' residences and the canteens under its management. However, it was not possible to fully account for specific items at the present time, as is the case, (along with other examples), of the nursery located at FCT Campus but under management of SAS NOVA. These aspects are being considering for the next editions.

Global indicators for NOVA University regarding energy consumption showed a downward trend since 2019 (base year):

- Electricity consumption was 19,5 million kWh in 2022, including 2% of domestic production at FCT and SBE campuses; this consumption represents a decrease of 10% compared with energy consumption in 2019.
- Gas consumption was 2,3 million kWh, including natural gas and LPG (i.e. propane and butane), which represents a decrease of 19% in comparison with 2019. The consumption of natural gas represents 75% of the total gas consumed, with LPG gas consumed only in the FCT campus (i.e. hall of residence and canteen).
- Consumption of oil products are not significant within the NOVA total energy consumption, and remain similar to 2019, with 3 781L of gasoline and 5 051 L of diesel used for domestic fleet.

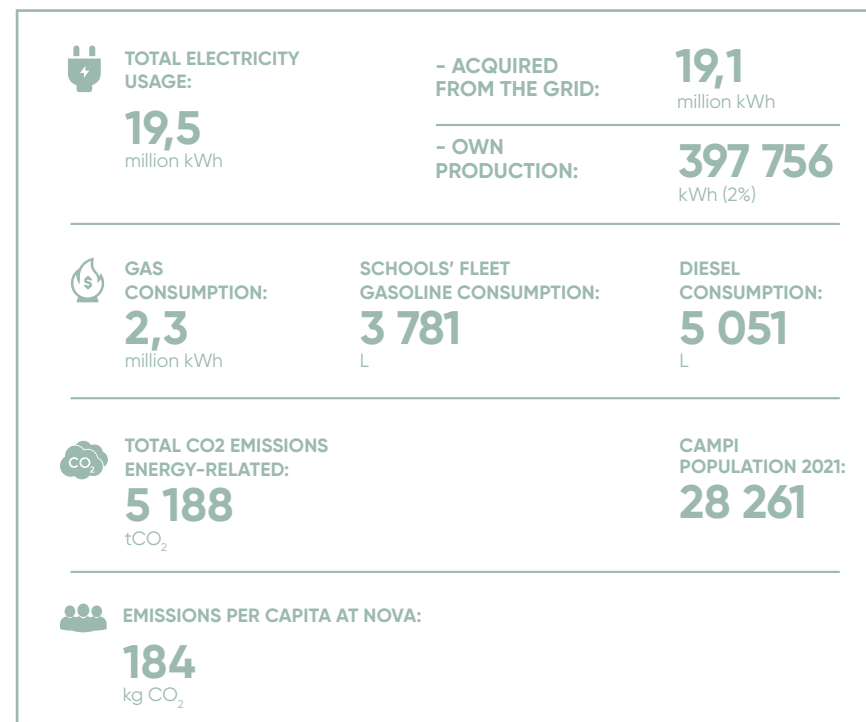
The estimated CO₂ emissions – Scope 1 and 2, according to GRI standards, related to energy consumption, totals 5 188 t CO₂ in 2022, with 90% from electricity consumption; this number represents a 24% decrease when compared with emissions estimated for 2019. The emissions of electricity consumption were calculated according to a [market-based method](#), based on emission factors included in the bills from the power supply companies. The downward trend is explained partially by the reduction in energy consumption and also by the

INFRASTRUCTURES AND SERVICES ENVIRONMENTAL IMPACT

decrease of the carbon intensity of electricity purchased from the grid (-17% on average in 2022 compared to 2019).

CO₂ emission factors for gas and oil products are from the National Inventory Report (APA, 2022), while for electricity were taken from the 2021 bills of each school, rectorate building and halls of residence.

ENERGY AND CO₂ EMISSIONS AT NOVA



* The figures for 2021 may not be exactly the same as those published last year, due to improvements on data gathering and methodologies, which were applied consistently along the time series for data coherence.

SCHOOLS OVERVIEW

The different schools and campuses are very diverse, with different sizes, occupancy profiles and characteristics. Correspondingly, energy usage (including electricity acquired from the grid and from own production), and related CO₂ emissions have different profiles, as shown in the graphics below. Caparica and Oeiras Campus are the top energy consumers due primarily to the extensive areas of energy-intensive laboratories, for research and teaching, accounting for 30% and 24% of total electricity consumption, respectively. Together with Carcavelos and Santana Campus, which also have considerable laboratory areas, the four campuses account for 83% of total electricity usage at NOVA.



INFRASTRUCTURES AND SERVICES ENVIRONMENTAL IMPACT

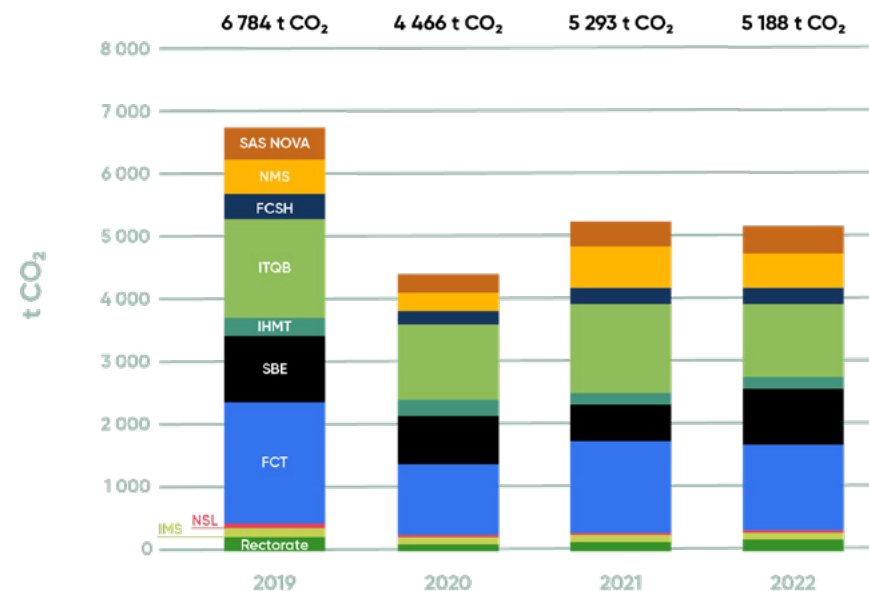


Figure 1: Estimation of CO₂ emissions (scope 1 and 2; energy related) by NOVA school for the period 2019 to 2022

GAS Consumption (GAS Natural + LPG) by school/Service [kWh]	2019	2020	2021	2022
Rectorate	150 540	97 976	208 341	172 045
IMS	60 035	102 670	4 512	3 390
NSL	9 868	16 876	742	557
FCT	403 397	341 173	324 400	46 123
SBE	86 764	90 703	70 991	97 910
IHMT	92 772	145 746	132 307	83 437
ITQB	129 017	707 134	361 518	131 509
FCSH	113 859	194 719	8 558	6 428
NMS	205 412	205 412	222 162	188 662
ENSP				
SAS NOVA*	1 568 690	1 085 218	1 341 580	1 549 461
TOTAL	2 820 353	2 987 627	2 675 110	2 279 522

* Include halls of residence and canteens.

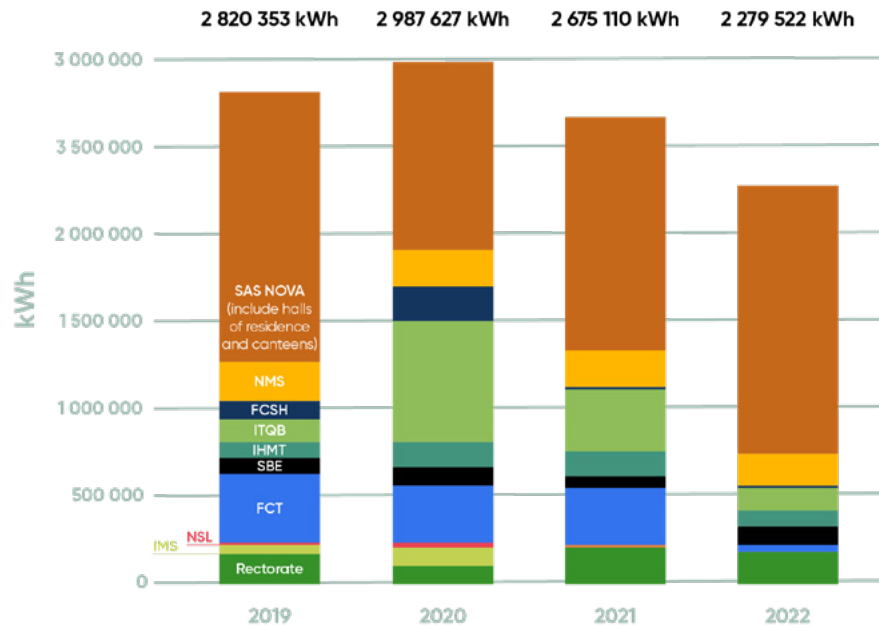


Figure 2: Gas usage per NOVA school for the period 2019 to 2022

INFRASTRUCTURES AND SERVICES ENVIRONMENTAL IMPACT

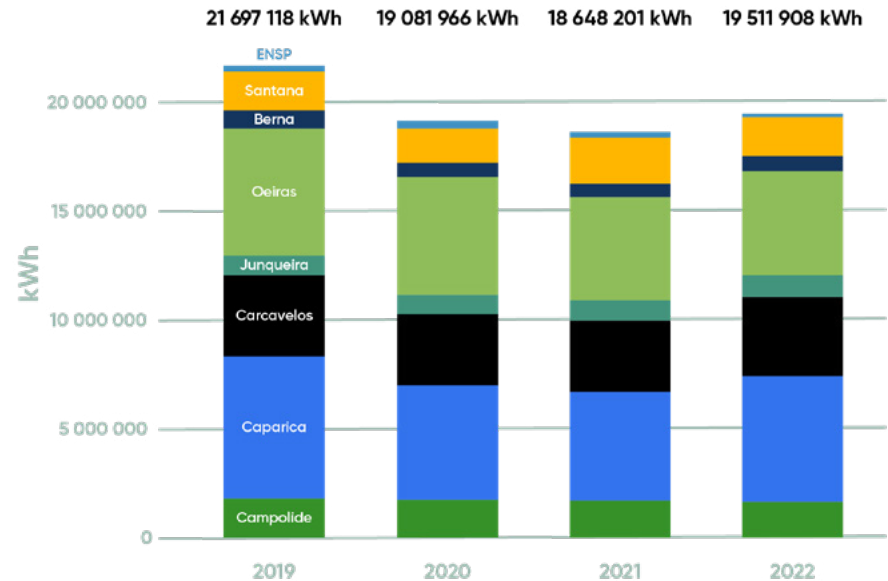


Figure 3: Electricity usage per NOVA campus for the period 2019 to 2022

TOTAL Electricity usage by school/Service [kWh]	2019	2020	2021	2022
Rectorate	477 041	448 666	453 215	507 213
IMS	410 207	433 668	392 111	382 951
NSL	201 960	180 420	171 791	194 788
FCT	6 420 023	5 308 504	5 040 102	5 709 620
SBE	3 899 569	3 239 219	3 223 353	3 662 587
IHMT	847 509	920 388	858 519	870 771
ITQB	5 837 399	5 411 197	4 889 361	4 727 095
FCSH	1 187 116	892 788	913 181	1 062 571
NMS	1 829 000	1 766 192	2 208 526	1 967 961
ENSP	65 209	68 299	62 129	80 124
SAS NOVA	522 085	412 625	435 913	346 227
TOTAL	21 967 118	19 081 966	18 648 201	19 511 908



Water consumption at NOVA provides different services including water for cooking, bathrooms, use in the laboratories and for irrigation. In 2022, total water consumed was 211 182 m³, with 10% from in campus water extraction, namely at Campolide and SBE campus. It should be underlined that at SBE only, on campus water extraction represented almost 30% of total water consumed. Compared with 2019, water consumed in 2022 increased 11%, which highlights the need to make a dedicated effort to improve the management of water consumption.



INFRASTRUCTURES AND SERVICES ENVIRONMENTAL IMPACT

WATER CONSUMPTION AT NOVA

TOTAL WATER USAGE: 211 182 m ³	- ACQUIRED FROM THE SUPPLY NETWORK: 190 328 m ³
	- OWN RESOURCES: 20 854 m ³ (10%)
TOTAL AREA: 821 066 m ²	CAMPI POPULATION 2021: 28 261
WATER USAGE PER AREA UNIT: 0,26 m ³ /m ²	WATER USAGE PER CAPITA AT NOVA: 7,5 m ³

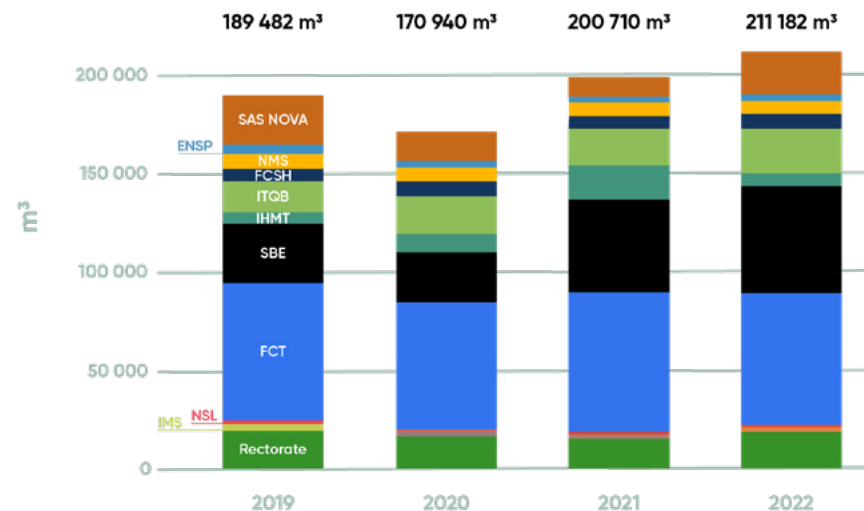


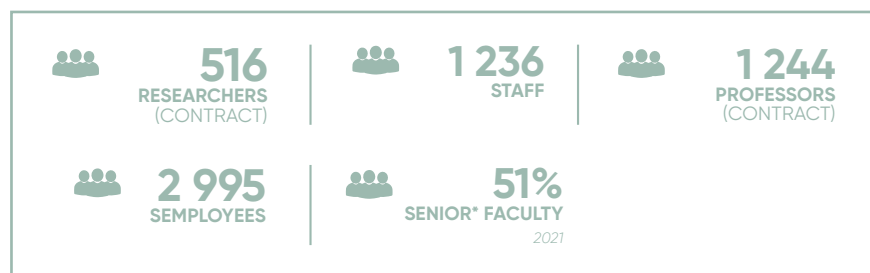
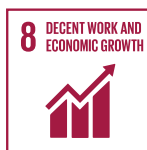
Figure 4: Water usage by NOVA school for the period 2019 to 2022

SOCIAL IMPACT

Social sustainability reflects the responsibility of NOVA University Lisbon to ensure the health and well-being of its community, which includes not only workers (teaching and non-teaching staff), but also students and alumni. It includes aspects that actively promote social diversity, equity and inclusion.

EMPLOYMENT

While promoting sustained, inclusive and sustainable economic growth, NOVA generates employment opportunities for faculty and staff. Seniority is a relevant indicator because it represents how the organization values talent. Values are presented in FTE – Full Time Equivalent, accounting for different type of contracts.



*All Professors in a career track.

DIVERSITY, EQUITY AND INCLUSION (DEI)

NOVA is committed to welcoming diversity, while assuring equity and inclusion.



DIVERSITY IN EDUCATION

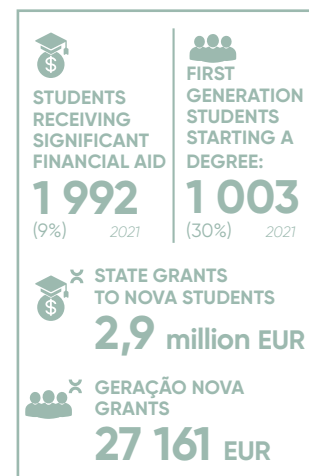
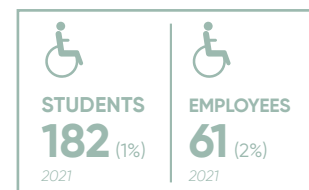
NOVA's students and faculty members come from all over the world, including a significant proportion of students from developing countries. Since language plays an important role as an inclusion factor, NOVA's Schools offer degrees and courses both in Portuguese and English.



INFRASTRUCTURES AND SERVICES

SOCIAL IMPACT

NOVA has also been addressing the inclusion of people with disabilities and from immigrant minorities, working together with organizations and local communities. Examples of such commitment include [Nova SBE inclusive Community Forum](#), which addresses the lives of people with disabilities through employment or education, and [NOVA Refugee Clinic](#), that gives legal support to migrant communities.



INCLUSION IN EDUCATION

Access to education is a major institutional concern, given its role in driving social mobility. In 2022, 30% (2021) of NOVA's students were the first in their immediate family to start a degree. To facilitate access, Portuguese state grants supported 9% (2021) of NOVA Students in 2022. Geração NOVA grants provide additional financial support and totalled 27 161 Eur in 2022.

NOVA Social Welfare Services manage three Halls of Residency and Canteens across NOVA Campuses, aiming to promote inclusiveness among NOVA's Community and support vulnerable students. NOVA's Halls of Residency are located in Lisbon and Almada and offer low-cost accommodation to students and faculty members. In the context of increasing accommodation prices in the Lisbon Metropolitan Area, this support is critical to students coming from other parts of the country, or abroad. Canteens offer subsidized complete meals to students.



¹ Students' meals only.

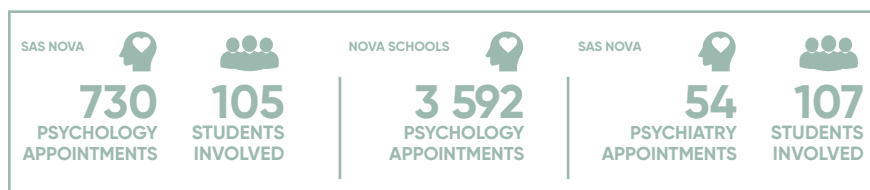
HALLS OF RESIDENCY	TOTAL BEDS	SUBSIDIZED TO SCHOLARS
ALFREDO DE SOUSA - CAMPOLIDE CAMPUS	180	112
FRAÚSTO DA SILVA - CAPARICA CAMPUS	210	112
LUMIAR HALL - OF RESIDENCY	70	20



² This aggregate value compares the halls' market prices to the price paid by scholars (76,23 Eur per month, established by the Portuguese State).

WELLBEING

Wellbeing is particularly relevant to universities, considering its role in the present and future lives of their students. NOVA's activities in this area are managed by NOVA's Social Welfare Services (SASNOVA) offering a wide range of services to students and staff ([check the list of services](#)). Some Schools also offer Psychology appointments to their students.



CULTURE AT NOVA

The Social Welfare Services and each of NOVA's Schools develop cultural activities, namely through the [libraries](#). Expositions, music concerts, book launch events, are some examples of the vibrant environment. Sustainability-related events are also part of NOVA's Agenda, among which NOVA Sustainability Week 2022 is worth mentioning.



INFRASTRUCTURES AND SERVICES

SOCIAL IMPACT

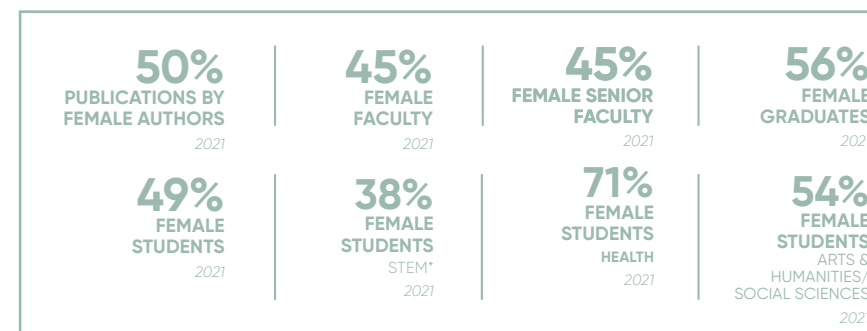
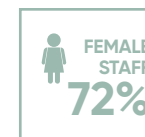
SPORTS AT NOVA

NOVA Social Welfare Services supports and promotes sports activities for NOVA's students. In some cases, schools might have their own teams, managed by the students' unions. In 2022, with the end of the pandemic, a significant increase in the number of students involved is observed, as well as the number of sports practiced.



GENDER EQUALITY

Gender equality in universities accounts for parity among employees, at the faculty and student levels. It is relevant among peers but also an important consideration in career progression and seniority. NOVA presents/strives for an even gender balance and a strong commitment to supporting women is in place after reinstating the Childhood Support Center in Almada, serving NOVA School of Science and Technology's population.



*STEM: Science, Technology, Engineering and Mathematics.

SUSTAINABILITY IN 2023



After consolidating the mapping of activities already carried out by the schools in this area, and creating some infrastructures that facilitate their internal and external promotion (such as the website and the event 'NOVA Sustainability Week'), 2023 will advance NOVA's strategy for sustainability.

NOVA'S THREE MISSIONS

Regarding Education for Sustainability, in 2023 at NOVA several initiatives will be taken, together with the Vice-Rectorate for Education: (1) for the undergraduate programs, a new course will be developed, optional and transversal to all scientific education areas, aiming to provide students with fundamental knowledge about sustainability and the Sustainable Development Goals; (2) for master programs, internships in companies will be prepared, in partnership with the SANTANDER Foundation, with the objective of providing NOVA's students with real-life experience while delivering knowledge which impacts the organization, taking a systemic change paradigm. Students will identify opportunities and solutions in the company's structure, as well as critical points for innovation regarding its climate transition.

In the Innovation and Community area, NOVA will start assessing its impact in the areas of sustainability. Regarding Research, an incentive will be designed to promote interdisciplinarity between the scientific areas of NOVA, within the framework of the SDGs, the European Green Deal, and the Paris Agreement. Both these initiatives will be developed together with the Vice-Rectorate for Research.

ORGANIZATIONAL SUSTAINABILITY

From an organizational perspective, the consolidation of indicators for sustainability has evolved over the last few years, as demonstrated by the last two annual reports, and a further step will be taken to generate a more detailed and comprehensive report. Taking advantage of the technical knowledge that NOVA has, through its professors and researchers, in 2023 priority will be given to the following components:

- **Waste:** a working group, with representatives from all schools, the rectory, and SAS NOVA, will develop baseline estimates on the production and separation of waste on the various campuses, in order to adopt best management solutions. A Waste Action Plan for each School is expected in 2023, aligned with the Campus Zero Waste concept.

- **Mobility:** knowledge about mobility standards in the NOVA community is essential for developing sustainable mobility solutions. This will be ascertained through a survey to be launched in 2023 among students, professors, non-teaching staff, researchers, and other employees of all Organic Units. This initiative is developed in partnership with the vice-rector of social innovation.

- **Energy transition:** in line with the ambition of the Paris Agreement with regard to carbon neutrality, priority will be given to mapping the potential of campuses for electricity production, and alternative financing models for energy transition will be identified.

- **Financial reporting:** the identification of expenses (investment and current) in the various areas of sustainability is the objective of a project to start in 2023, involving SBE students. This initiative will facilitate access to NOVA's financial commitment to sustainability.

- **NOVA GreenLabs:** a working group with professors and researchers from the four Schools that have 'wet' laboratories on their campuses (FCT, NMS, ITQB and IHMT) will be established to develop a plan for the adoption of good practices, aiming to become certified as Green Labs.

NOVA expects to obtain new and more consistent information on various aspects of sustainability, which will provide NOVA with better resources to orientate the report towards the impact rankings with more quality, and to aspire to publish a sustainability report in line with international best practices. The Annual Report for 2022 will be published together with NOVA's Activity and Accounts Report. For the 2023 Report, the STARS methodology is expected to be adopted.

The continuous involvement of the NOVA community in sustainability matters, both inside and outside NOVA, is a priority, involving all stakeholders. To this end, an active communication plan will be adopted, in close collaboration with the various schools, and the 2nd edition of Sustainability Week will take place, among other events. NOVA Ágora is expected to consolidate, with more students involved in NOVA 4 The Globe's different initiatives.

Finally, NOVA University is becoming (pro)active in international networks with a sustainability scope, as it is the case of the EUTOPIA alliance, the UNAI (United Nations Academic Impact), YERUN and other relevant networks.

ACKNOWLEDGEMENTS

This report is a collective work from different stakeholders at NOVA, coordinated by Pro-rector Julia Seixas and sustainability coordinator João Loureiro Rodrigues. Information was gathered from different departments of NOVA's nine Schools, the successful accomplishment of the project's goals are solely attributed to a strong sense of belonging. We would like to thank, in particular, all the members of NOVA 4 the Globe, who devoted their efforts to gather and prepare information and data: Tomás Ramos, Ana Santos Pinto, Maria A. Cunha-e-Sá, Conceição Calhau, Claire Bright, Tiago Correia, Miguel Neto, Nélson Saibo, Julian Perelman, Marco Lopes, Catarina Bernardo, Luís V. Martins, Vânia Coucello, Jorge Correia, Isabel Craveiro, Sara Ribeiro, Ana Sanchez, Teresa Magalhães, and João Carreiras.

We would like to thank people at NOVA who contributed in different ways to this report: Ana Ventura, Carla Curado, Carla Portela, Catarina Pinto, Hélder Lopes, Vice-rector Isabel Rocha, Vice-rector João Amaro de Matos, Joana Gaspar, Joana Taboas, Katherine Mahoney, Patrícia Ferreira, Rita Falcão, Sandra Magalhães, Susana Costa and Tiago Guedes. Many individual contributors in each School, the coordinators of the Education programmes and professors made it possible to complete our task. .

A big thank you for all of them.





Visit the website 

Contact: sustentabilidade@unl.pt